



## Catchment Restoration Fund (CRF) Project Briefing Note

### Telford Urban Catchment Restoration

Over 250 years of industrial activity and regeneration have heavily modified Telford's urban catchments. Under the Water Framework Directive assessments the Lydebrook and Madebrook catchments are failing. Macro invertebrates communities are fragmented and prone to local extinctions. The watercourses are overloaded with urban diffuse pollution via misconnections, road run off and the legacy of the townships industrial past. Water is a fundamental part of the green infrastructure of urban Telford, Shropshire Wildlife Trust have been championing the positive care of Telford's green network for decades and now the two come together in the catchment based approach to urban diffuse pollution.

In close partnership with Telford and Wrekin Council, Severn Trent Water, Severn Gorge Countryside Trust, local community groups and with the support of the Environment Agency we are working to lift the fortunes of the two catchments. A successful bid to the CRF has meant that engineering interventions will take place on both water courses to improve ecological function and connectivity. Investigative work is also underway to support the take up of Sustainable Drainage Solutions (SuDS) working in partnership with the Business Environmental Sustainability Support Scheme for Telford which has 120 business members. Volunteers have been trained in aquatic invertebrate monitoring to support the project and a schools programme has been initiated to encourage

local ownership. A series of community events have been organised to engage residents in the care and understanding of their local watercourse. Practical work parties of volunteers and corporate staff teams will be tackling small scale issues on each catchment.

Key facts	
<b>River Basin District</b>	Middle Severn
<b>Catchments</b>	Lydebrook & Madebrook
<b>Outcomes</b>	<p><b>Madebrook</b></p> <ul style="list-style-type: none"> <li>4 rock ramp cascades will be installed and over 400m new de-culverted watercourse created</li> </ul> <p><b>Lydebrook</b></p> <ul style="list-style-type: none"> <li>Aquatic re-vegetation scheme on balancing pools</li> <li>Water course improvements via tree and hedge works</li> </ul> <p><b>Both catchments</b></p> <ul style="list-style-type: none"> <li>Schools resource pack produced - 'River Rangers'</li> <li>Trained volunteers leading project sampling and monitoring</li> <li>Community awareness of urban catchment challenges</li> </ul>
<b>Start Date</b>	July 2012
<b>End Date</b>	March 2013
<b>Budget</b>	£382k
<b>Project Partners</b>	Telford and Wrekin Council, Severn Trent Water, Severn Gorge Countryside Trust, Environment Agency, Madebrook and Stirchley Dingle LNR Steering Group

## Description of Works

The Lydebrook catchment has been massively disrupted by industrial activity. Where we can get access to the water we are planning to install new aquatic vegetation to help self-clean the water, work on riverside trees and hedges to reduce sedimentation from erosion and improve ground cover. The interventions are targeted at three balancing pools and short stretches of stream channel. In the headwaters area we shall be investigating the potential of a SuDS system to treat road-off.

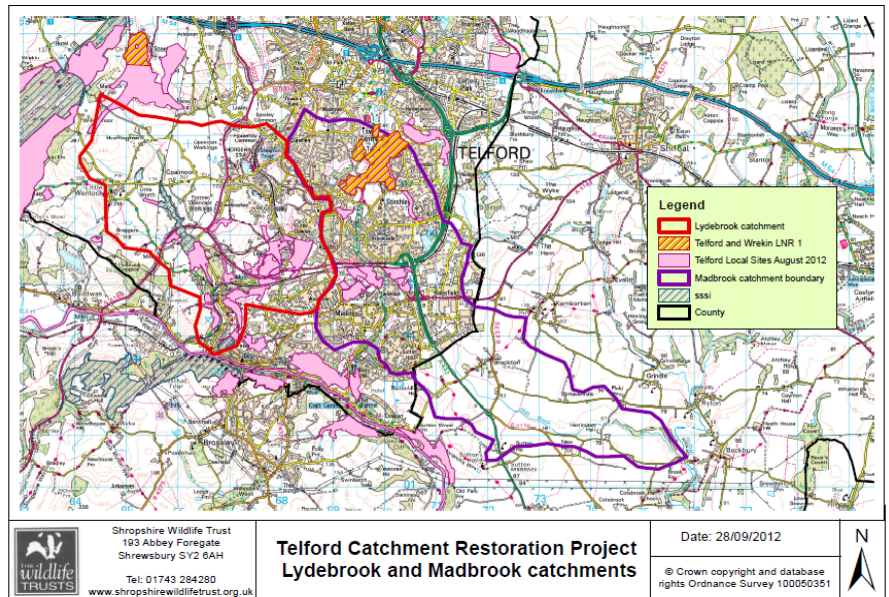
On the Madebrook catchment we are designing and installing four new rock cascades to improve oxygenation and ecological connectivity. Over 400m of de-culverted watercourse will be created through the Madebrook and Stirchley Dingle proposed Local Nature Reserve. The new watercourse will be allowed to naturally re-vegetate and strengthen the isolated aquatic community found on this section of the much modified water course. The new channel will include features to encourage educational access, promote stream dynamics and enhance invertebrate populations. We are also working with Telford Angles Association to improve disabled angling access.

We will be promoting the Retro fitting of SuDS in urban Telford in a number of ways. Working with RICOH Ltd we aim to have a small scale SuDS feature fitted, we are exploring SuDS feasibility at the Halesfield Industrial Estate via a PhD research project and we are working with the BESST network via their seminar programme to promote wise water management to their members.

Volunteers are integral to the Trust approach and the CRF project will see volunteers leading the sampling and monitoring and carrying out small scale remedial works throughout both catchments. Our Education Team are developing a 'River Rangers' school resource which is being trialled through two schools (one per catchment). All the community consultation in regard to the engineering works is being supported by more general community events to promote and engage local residents in the care of the rivers and streams in their neighbourhood.

## What will success look like?

Our vision is to create a significant new section of wildlife friendly waterway in the heart of Telford's urban community, with a skilled band of local volunteers and young people to look after it for future generations. Elsewhere we hope to support the regeneration of a series of degraded pools to become enhanced community assets. We would also hope that our project will inspire and support new and existing efforts to manage our precious water resources in a wiser and more thoughtful way.



### About the team

**Project Manager:** Pete Lambert

**Finance Manager:** Helen Gilmour

**Director:** Colin Preston

### Other contacts

**Environment Agency** Ian Edwards



Department  
for Environment  
Food & Rural Affairs



Contact Shropshire Wildlife Trust Rivers Team on  
Tel No 01743 232394 or email [petel@shropshirewildlifetrust.org.uk](mailto:petel@shropshirewildlifetrust.org.uk)