

20th Sept. 2017
(old channel)



20th Sept. 2017



9th Oct. 2017



9th Nov. 2017

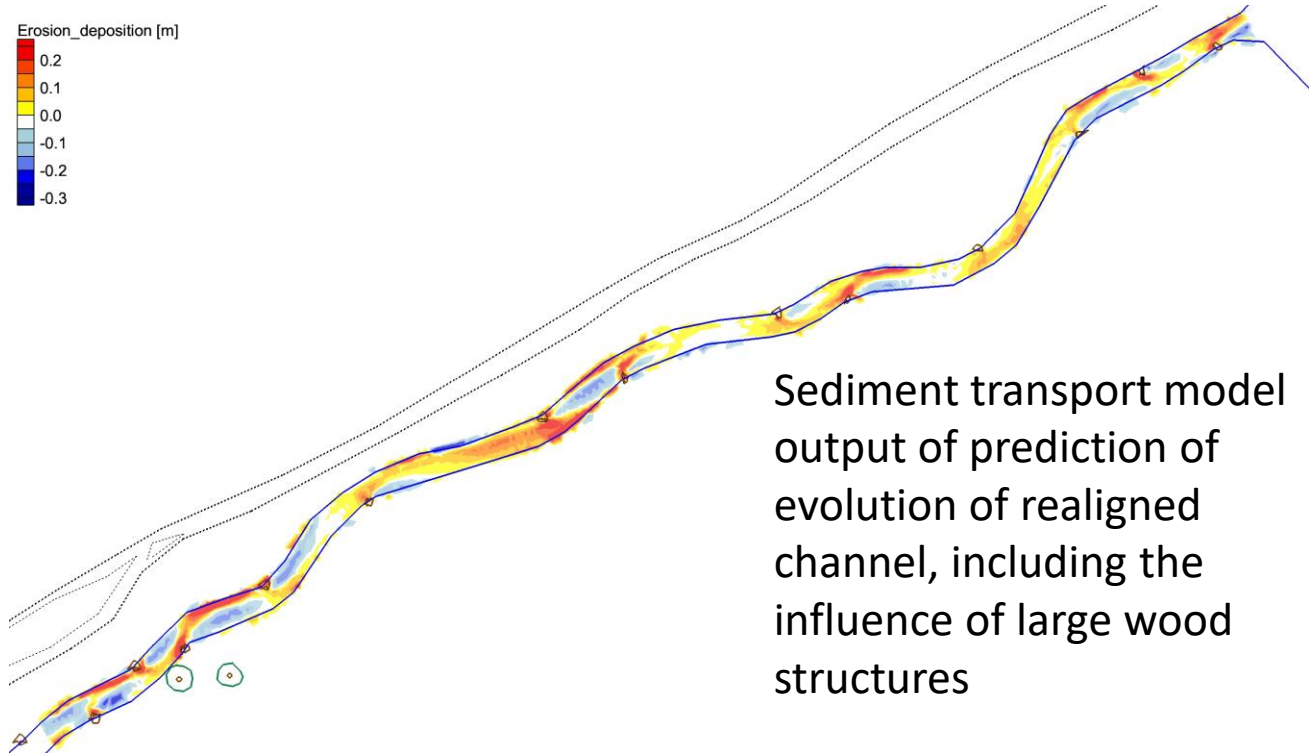
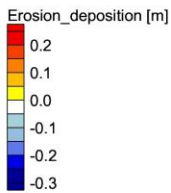


3rd May 2018

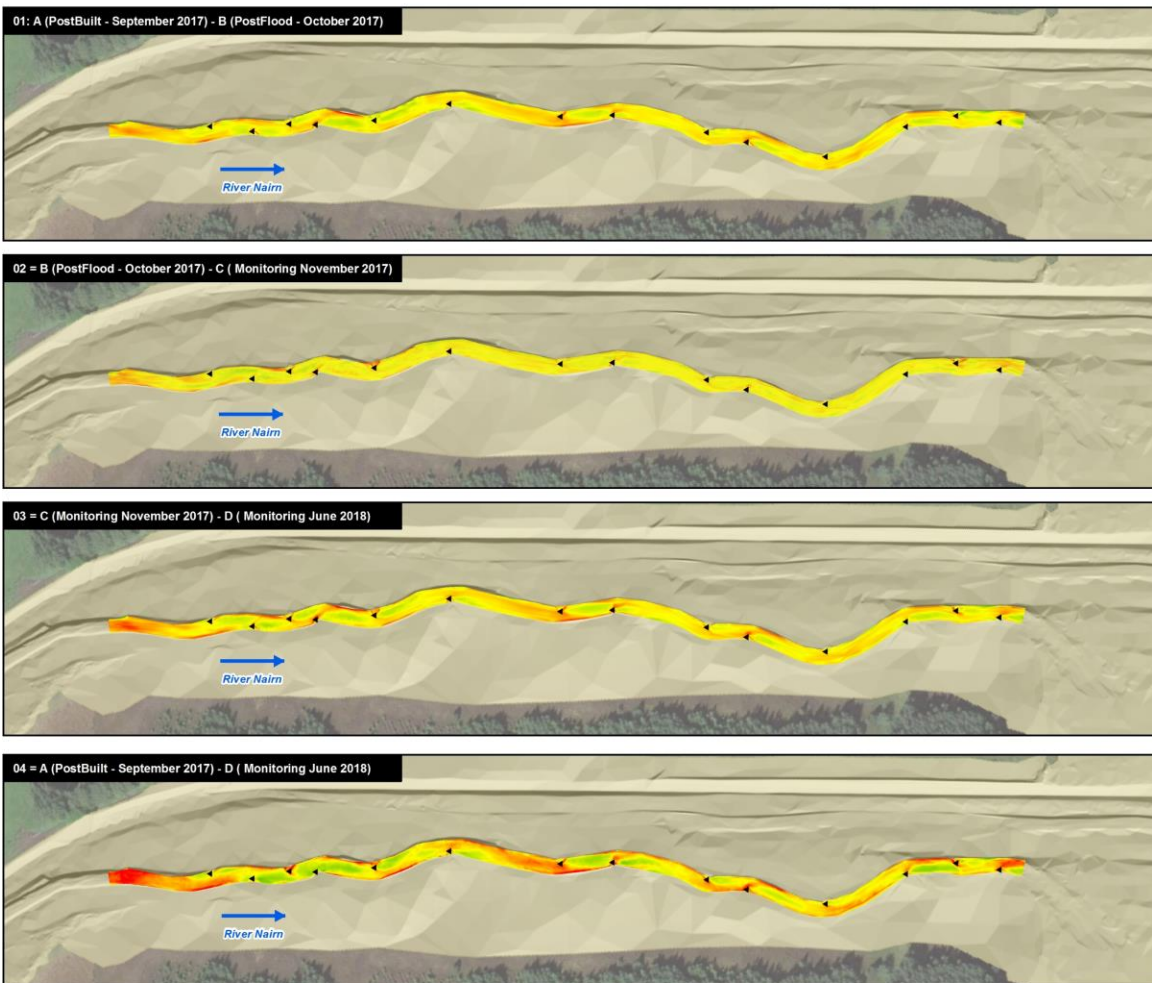


17th Nov. 2018





Sediment transport model output of prediction of evolution of realigned channel, including the influence of large wood structures



Project Number	UK17 - 1011		
Project Title	Aberarder Construction		
Drawing Title	River Naim DEM surfaces analysis		
Drawing Number	2018113002		
HIGHLAND (Scotland)			
Legend			
▲ Large Wood Structures (LWS)			
Surface difference (m)			
0.5 m (Deposition)			
0 m (No change)			
-0.8 m (Erosion)			
Client	Aberarder Estate Estate Office Aberarder, Inverness. IV2 6UE		
0 20 40 80 m			
Scale @ A4 - 1:2,500 British National Grid / GCS OSGB 1936			
Designed	Drawn	Reviewed	Approved
-	JL	AW	HM
Date	November 2018		
Service Layer Credits: Contains OS data © Crown Copyright and database right 2018 Source: Esri, DeLorme, GeoEye, Earthstar Geographics, CNES/Airbus D.S. USA, USGS, AeroGRID, IGN, and the GIS User Community			
Page	2 of 2		

Surveyed evolution of realigned channel, Sept 2017 to June 2018



Aerial view of realigned channel section, 19th Oct. 2017