



Holnicote Estate – River Aller and Horner catchments – 12,500 acres from source to sea



Landscape scale, catchment-based approach



Partnership working



Bigger, better and more joined up



From habitat to drainage



From drainage to habitat



Restoring dynamic complexity



US Forestry Service, Oregon summer 2019



Mud Pool Meadow, Selworthy Farm autumn 2019



Mud Pool Meadow, Selworthy Farm autumn 2019



Mud Pool Meadow, Selworthy Farm autumn 2021



Mud Pool Meadow, Selworthy Farm autumn 2023



Mud Pool Meadow, Selworthy Farm autumn 2023



Mud Pool Meadow, Selworthy Farm autumn 2023



Natural process



Disturbance



Abundance and diversity



River Aller, Selworthy Farm Summer 2022



River Aller, Selworthy Farm autumn 2022



River Aller, Selworthy Farm autumn 2022



River Aller, Selworthy Farm July 2023



River Aller, Selworthy Farm August 2023



River Aller, Selworthy Farm August 2023



River Aller, Selworthy Farm January 2024



River Aller, Selworthy Farm January 2024



River Aller, Selworthy Farm November 2023



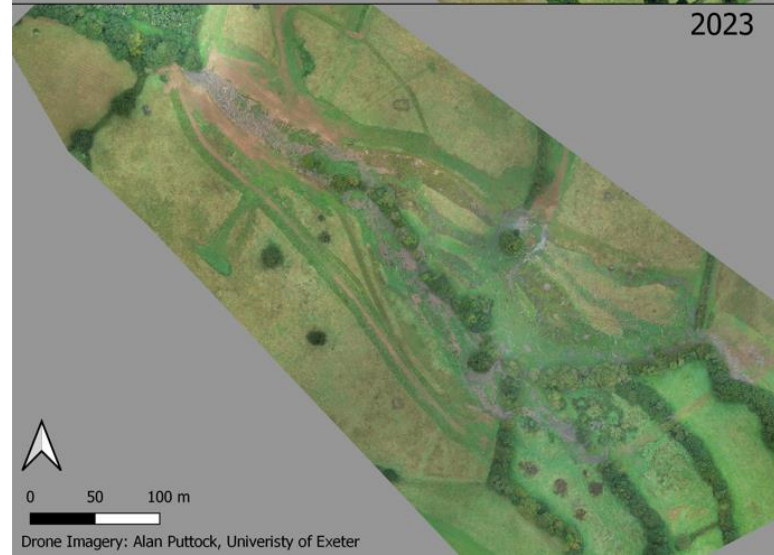
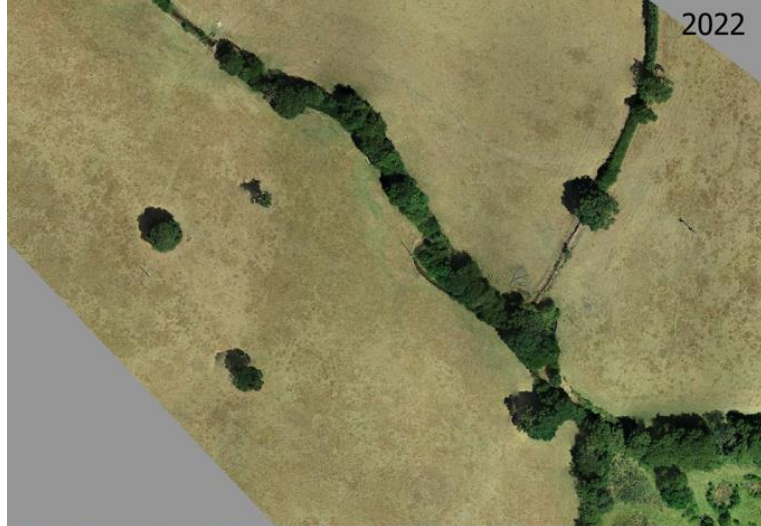
River Aller, Selworthy Farm January 2024



River Aller, Selworthy Farm January 2024



River Aller, Selworthy Farm January 2024



0 50 100 m

Drone Imagery: Alan Puttock, University of Exeter



0 50 100 m

Drone Imagery: Alan Puttock, University of Exeter



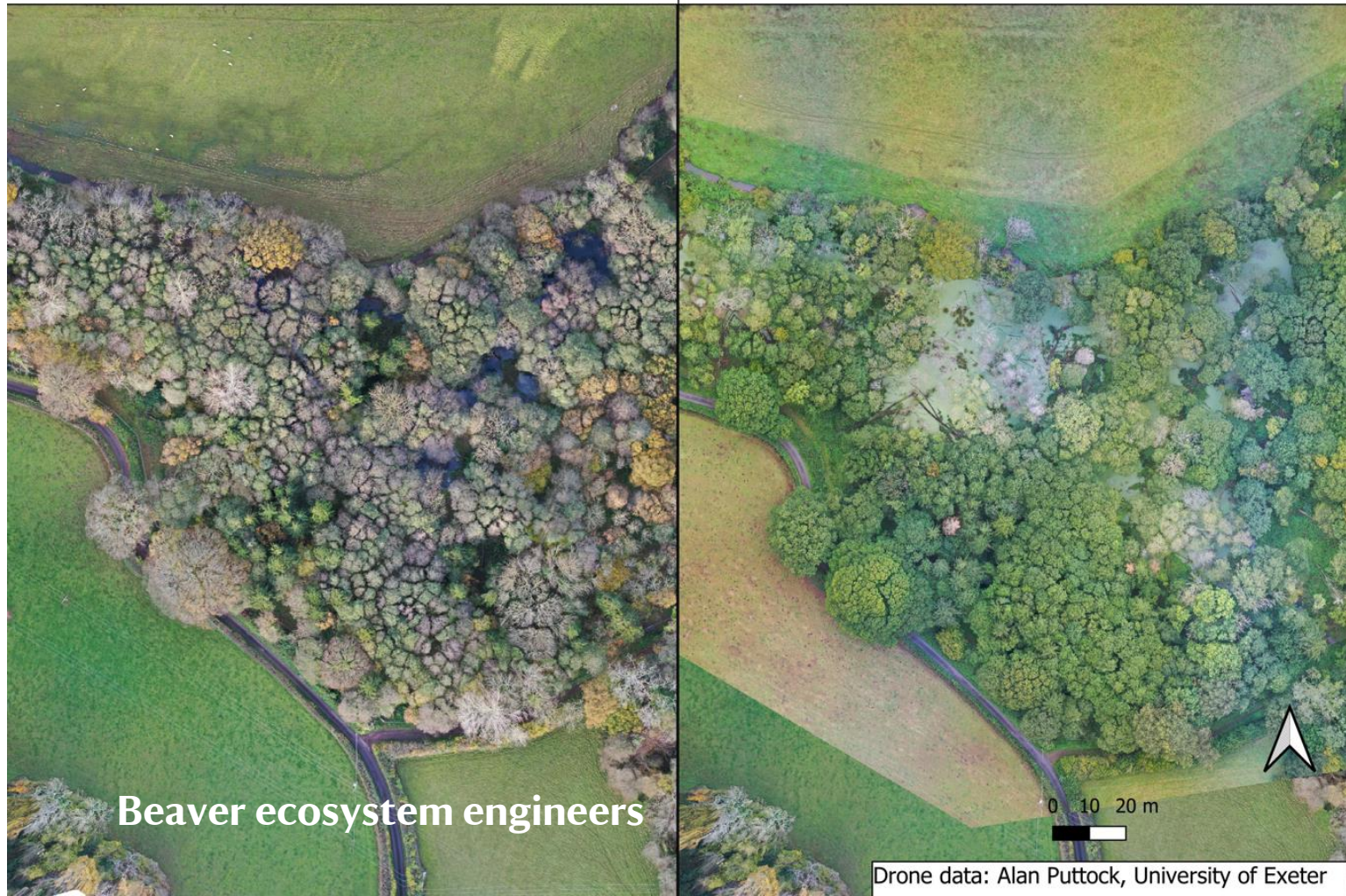
Wilder river corridors



Ecosystem function

Winter 2020

Autumn 2023



Beaver ecosystem engineers

Drone data: Alan Puttock, University of Exeter



Disturbance and opportunity



Successional habitat



Landscape Recovery Scheme – resilient landscape and community



Engagement – community and visitors



Getting involved



Sharing knowledge and lessons learned



Developing a real buzz