

General reprofiling throughout sub-reach to reduce lateral constraints between retained embankments

Remove river right embankment close to channel and allow flow into lower elevation area to right.

Remove river right broad embankment within in-set floodplain



Study sub-reach C

Embankment on river left set back closer to the track and raised to the required level to prevent overflow during floods.

Embankment removal – no requirement to set-back due to elevation of ground on river right/ east side.

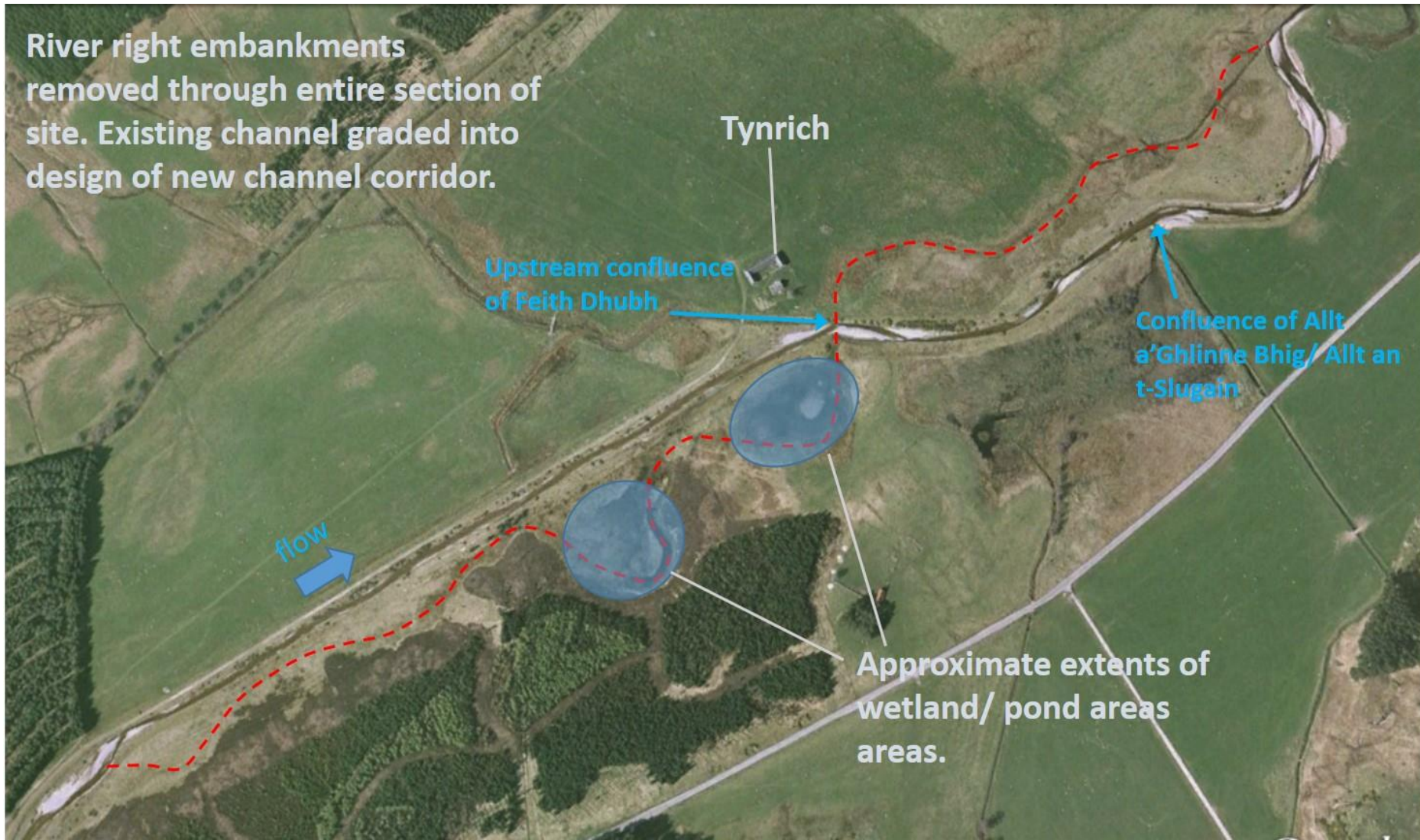
flow



River right embankment to remain to retain track access to Bridgend, although reprofiled on river side.



Study sub-reach D



Study sub-reach E